



Wind Power Development in St.Vincent and the Grenadines

St.Vincent Electricity Services Ltd.
(VINLEC)



St.Vincent





VINLEC



- St. Vincent Electricity Services Limited (VINLEC) is the State owned electricity company in St. Vincent and the Grenadines.
- Power systems on the main island of St. Vincent, and the Grenadine islands of Bequia, Canouan, Union Island and Mayreau.
- Generation on St. Vincent is done using three small hydro electricity plants and two diesel plant.
- Grenadine Islands have separate diesel plants.
- VINLEC transmits and distributes the electricity using 33kV transmission lines, 11kV primary distribution lines, and 400V secondary distribution lines.



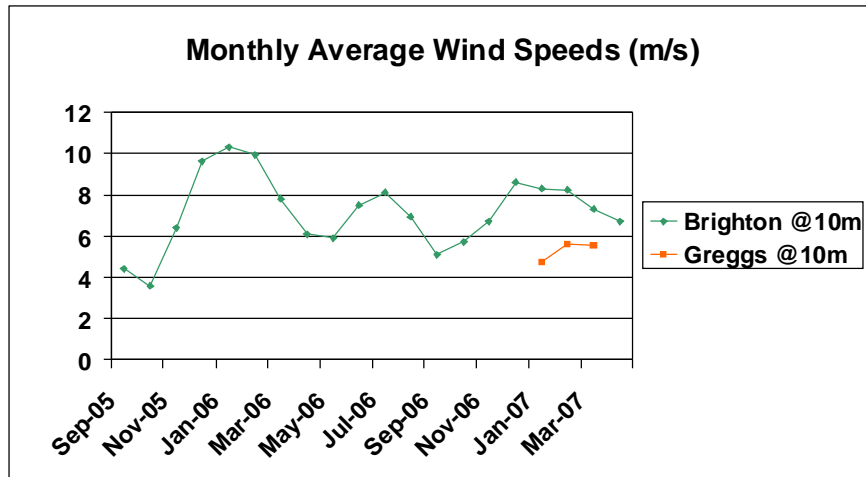
Wind Energy Study



- The study began with the assistance of the GTZ in August 2005.
- Measurements were taken at 10 meters above ground level at a site in Brighton.
- Brighton was deemed suitable for wind energy applications after 1 year of data collection.
- Land acquisition would be extremely expensive.
- Another location was selected in Greggs in October 2006
- After a few months of collecting data this location was shown to be inferior to Brighton.



Wind Energy Data: Brighton and Greggs



Brighton





Greggs



Wind Energy Study



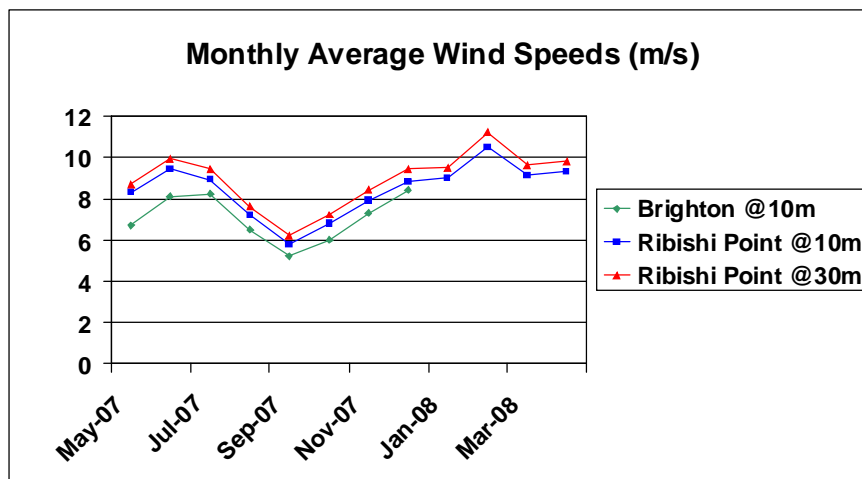
- A new site was selected in February 2007 at Ribishi Point.
- Data collection began in April 2007 at 10 and 30 meters above ground level.
- After a year of data collection, Ribishi Point was determined even more suitable than Brighton for wind energy applications.
- The land is government owned and can be easily acquired.



Ribishi Point Site



Wind Energy Data: Brighton and Ribishi Point





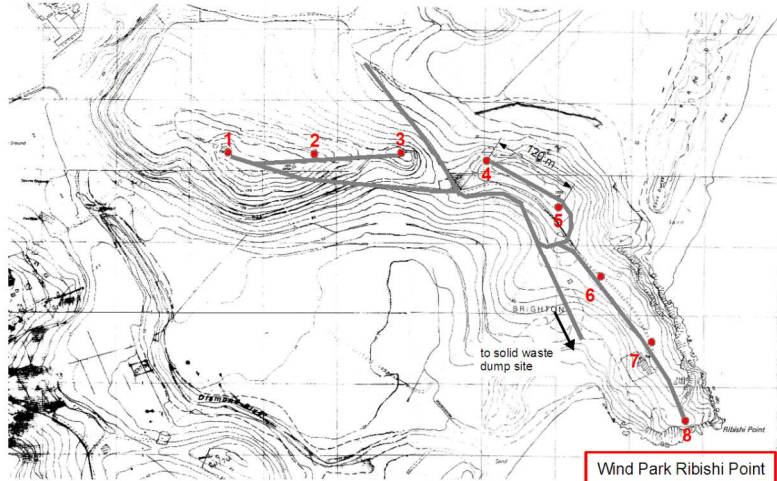
Current Status

- In June 2008 a call for expression of interest in the development of a 6 to 8 MW wind park at Ribishi Point was sent out.
- Would operate as either a Joint venture with Vinlec or an Independent Power Producer (IPP) under a power purchase agreement with Vinlec.
- Responses from ten interested parties were received.



Current Status

- Responses were evaluated and the Terms of Reference will be sent out by the end of September 2008.
- Parties have two months to respond.
- Final decision on the investor and the investment arrangement would be made by the end of 2008.



Wind Park Ribishi Point
Micro Location 7.2 MW



Thank You